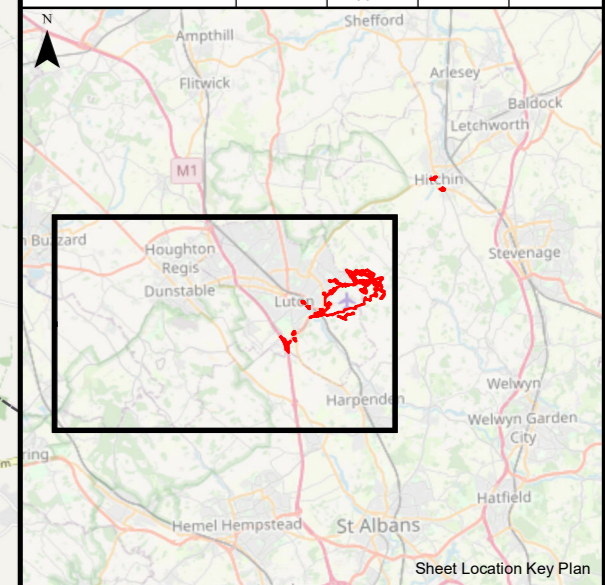


This drawing may contain mapping by permission of Ordnance Survey on behalf of HMSO © Crown Copyright and database rights 2019 Ordnance Survey 0100031673
 All structure positions are indicative. The proposed works will be subject to detailed design development. The changes will be within limits of deviation specified in the Development Consent Order.

- Legend**
- Proposed Development Boundary
 - Local Authority
 - Baseline Noise Monitoring Location

Contains OS data (c) Crown copyright and database right 2021.
 Service Layer Credits: © OpenStreetMap (and) contributors, CC-BY-SA

First Issue	MAB	ER	CS	15/12/21	P01
Revision History	Drawn	Checked	Approved	Date	Rev.

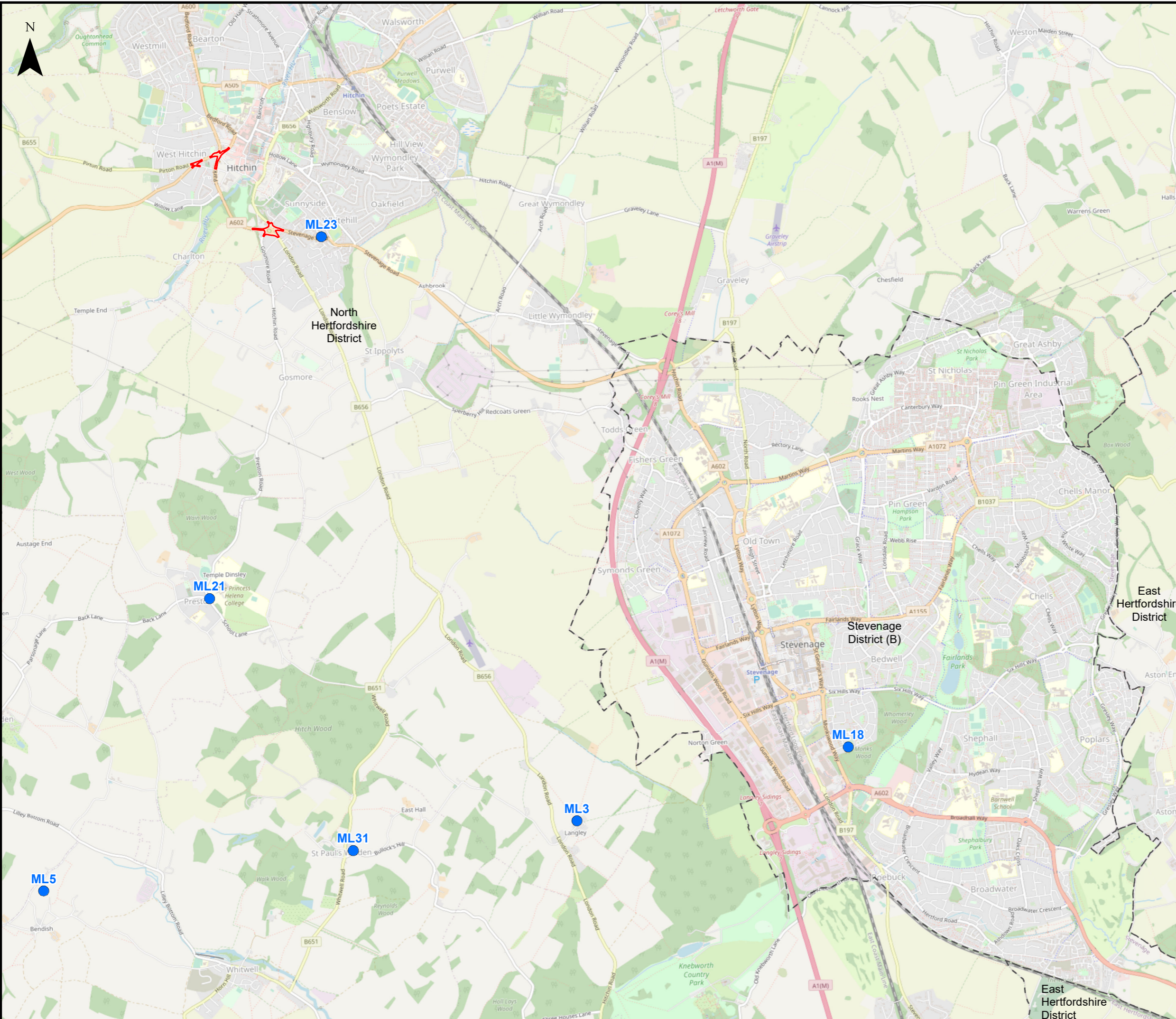


Luton Rising
 Our airport. Our community. Our planet.
 Luton Rising
 Hart House Business Centre
 Kimpton Road, Luton, LU2 0LA
 www.lutonrising.org.uk

**London Luton Airport
 Development Consent Order**

Drawing Title
**Figure 16.3
 Baseline Noise Monitoring Locations (Page 1 of 2)**

Purpose of issue SUITABLE FOR INFORMATION				Suitability S2	
Drawn MAB	Checked ER	Approved CS	Date 15/12/21	Scale 1:65,000	Size A3
DCO Application Ref. TR020001		APFP Regulation		DCO Document Ref.	
Drawing Number LLADCO-3C-AEC-00-00-DR-YE-0011					Revision P01
Project - Phase - Originator - Asset/Zone - Sub Asset - Type- Discp. - Number					

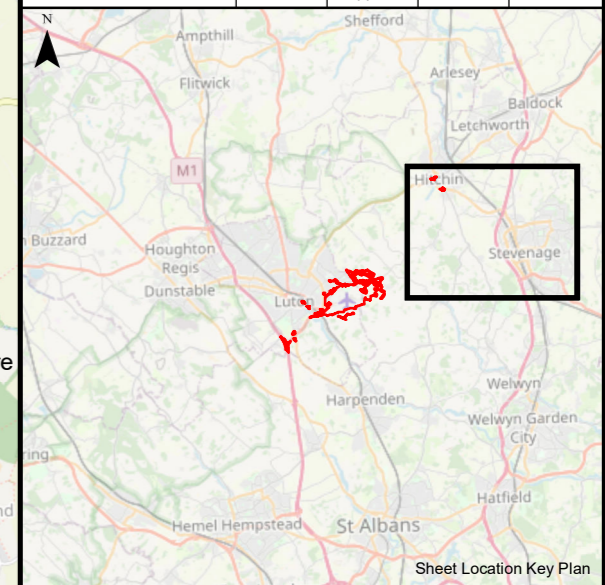


This drawing may contain mapping by permission of Ordnance Survey on behalf of HMSO © Crown Copyright and database rights 2019 Ordnance Survey 0100031673
 All structure positions are indicative. The proposed works will be subject to detailed design development. The changes will be within limits of deviation specified in the Development Consent Order.

- Legend**
- Proposed Development Boundary
 - Local Authority
 - Baseline Noise Monitoring Location

Contains OS data (c) Crown copyright and database right 2021.
 Service Layer Credits: © OpenStreetMap (and) contributors, CC-BY-SA

First Issue	MAB	ER	CS	15/12/21	P01
Revision History	Drawn	Checked	Approved	Date	Rev.



Luton Rising
 Our airport. Our community. Our planet.
 Luton Rising
 Hart House Business Centre
 Kimpton Road, Luton, LU2 0LA
 www.lutonrising.org.uk

**London Luton Airport
 Development Consent Order**

Drawing Title
**Figure 16.3
 Baseline Noise Monitoring Locations (Page 2 of 2)**

Purpose of issue SUITABLE FOR INFORMATION				Suitability S2	
Drawn MAB	Checked ER	Approved CS	Date 15/12/21	Scale 1:35,000	Size A3
DCO Application Ref. TR020001		APFP Regulation		DCO Document Ref.	
Drawing Number LLADCO-3C-AEC-00-00-DR-YE-0011					Revision P01
Project - Phase - Originator - Asset/Zone - Sub Asset - Type- Discp. - Number					